

AdA

Available in the industry's most popular colors:



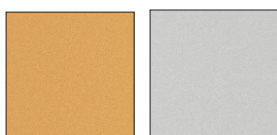
AdA-01-12 (1/32") AdA-01 (1/16") Black	AdA-07 (1/16") Dark Chocolate	AdA-02P-12 (1/32") AdA-02P (1/16") Bright White	AdA-02-12 (1/32") AdA-02 (1/16") White	AdA-22 (1/16") Ivory
---	---	--	---	--------------------------------



AdA-03 (1/16") Red	AdA-12 (1/16") Wineberry	AdA-04 (1/16") Blue	AdA-27 (1/16") Blueberry	AdA-09 (1/16") Navy Blue
------------------------------	------------------------------------	-------------------------------	------------------------------------	------------------------------------



AdA-53-12 (1/32") AdA-53 (1/16") Almond	AdA-58-12 (1/32") AdA-58 (1/16") Pumice	AdA-31-12 (1/32") AdA-31 (1/16") Pewter	AdA-10-12 (1/32") AdA-10 (1/16") Dark Grey
--	--	--	---



AdA-92-12 (1/32") AdA-92 (1/16") Gold	AdA-93-12 (1/32") AdA-93 (1/16") Silver
--	--

AdA

The matte finish of IPI's ADA Compliant Plastics complies with the Americans with Disabilities Act (ADA) Federal regulations.

This material is Braille-engravable, laserable and routable sheets, come in a great selection of color combinations. Outdoor usage and UV stable.

*AdA is also available with adhesive. To order with adhesive, place an "/ADH" at the end of the item code. For example: Black, 1/32" with adhesive would be: AdA-01-12/ADH.



INNOVATIVE PLASTICS INC.
New Perspectives in Sign Materials

P.O. Box 7065 Algonquin, IL 60102
815 477 0778 Fax: 815 477 1210
www.inoplas.com e-mail: IPI@mc.net

All IPI products are available only through your authorized IPI distributor.